

Chronic Back Pain Seating : SD1, SD2, SD3



SD1 Extra High Back



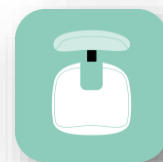
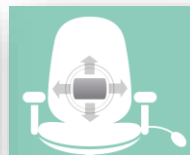
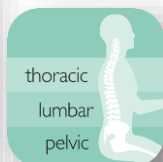
SD2 High Back



SD3 High Back with Headrest

Each chair is designed in a modular fashion to ensure each key area of the spine receives optimal support. The **unique** features are:

1. The **triangulation of support** provided by the personalisable pelvic cushion, the 3 way adjustable lumbar and Thoracic pump
2. The **coccyx relief cut out**
3. The **use of memory foam**.



Other **ergonomic features** include:

- **6-way adjustable forward tilting mechanism:** adjustable for seat tilt, depth, height, tension (weight) control, backrest height (ratchet) and tilt
- **6 seats to complement 2 back configurations** including height and tilt adjustable headrest for custom built comfort
- **5-way adjustable memory foam-upholstered arms;** adjustable for: height, depth (forward and back), width and (locking) swivel